

SPECIFICATIONS

GENERAL:

The surface drainage system shall be 2000 Series Elevator Multi Slot Drain complete with slotted linear trench opening as manufactured by Slot Drain Systems.

LOAD CLASS:

Load Class A

OUTLET:

4" SCH 40 End Bottom Outlet

NOTE:

Default slot opening for 36" long drain is 2 1/2" with 6 x 5/16" Slot Opening
Modular units can be joined to increase total capacity and flow rate, if needed
Design customization available based on the project requirements
Heelproof insert can be raised in tile over finish (requires architect height specification)
Default end caps welded to the drain body

DESIGN FEATURES:

Material: T316 Stainless Steel
Slot Opening: 2 1/2" Total (6 x 5/16" Heelproof)
End: End Cap
Thickness: 16GA
Section Lengths: 3' (36")
Custom Lengths available

FLOW RATE:

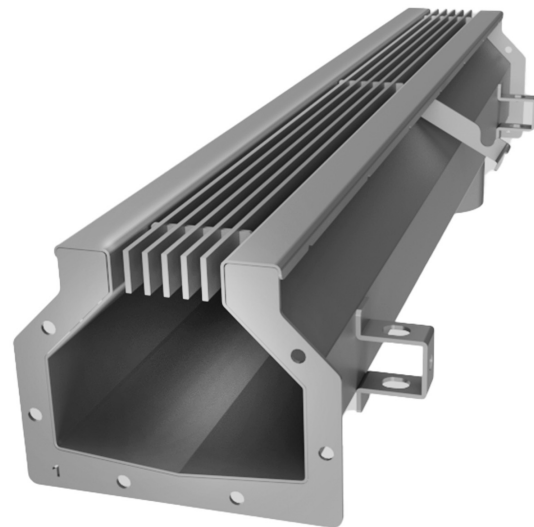
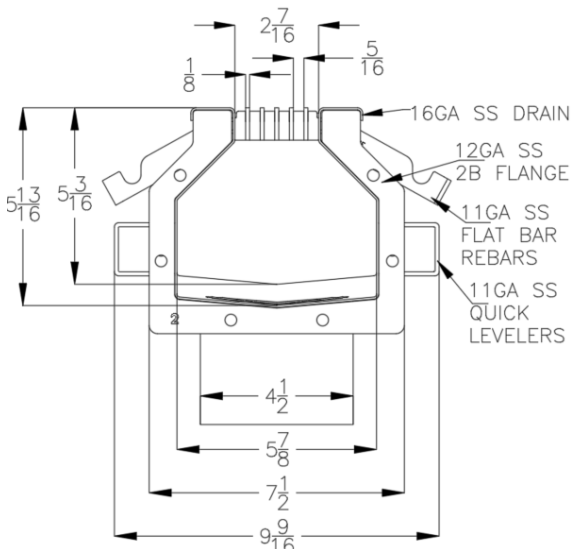
38 gpm (per foot of drain)
100 gpm per 3' of drain length

This drain configuration complies with:

ASME A112.6.3
NYC BC 403.6.1, BC 3007.3
California Building Code 403.6.1, 403.6.2, 3007.4, 3008.4
San Francisco Fire Code, Section 511.1.4

INSTALLATION:

The 2000 Series Elevator Multi-Slot Drain System shall be installed in accordance with the manufacturer's installation instructions and recommendations.



DRAIN CHANNELS

DESCRIPTION	PART NO.	INVERT SHALLOW INCHES	INVERT DEEP INCHES
2000 SERIES ELEVATOR MULTI SLOT DRAIN - 3' SECTION	SD26091 - H102C3B134	5 3/16	5 13/16

SPECIFYING ENGINEER IS RESPONSIBLE FOR CONCRETE ENCASEMENT AND REINFORCING BASED UPON APPLICATION AND LOCAL CODES.
SLOT DRAIN SYSTEMS RESERVES THE RIGHT TO CHANGE THE PRODUCT AND SPECIFICATIONS WITHOUT NOTICE